



CONVERGING UNIVERSE

LoRaWAN RS485 Converter



LoRaWAN RS485 converter is designed to reduce the problem of installation of RS485 cables for monitoring various devices with the RS485 interface supporting Modbus RTU.

Providing a Long Range Wireless Communication Coverage Of 3 Km with Low Power Consumption

LoRaWAN RS485 converter is a ideal way to connect existing equipment to cloud using a long range wireless

Key Features at a glance:



Modbus RTU through RS485



Standard LoRaWAN Connectivity



Support Class A and Class C operations



AES128 bit End to End Encryption

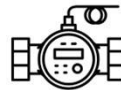


Personal Support for your Implementation

Application Areas:



Energy Monitoring



Flow metering



Process Monitoring



Predictive Maintenance



Asset monitoring



Specifications	
Input Power	9 – 24 VDC
Power Consumption	Less than 1 W @ 12 VDC
Protections	Reverse Polarity, Overvoltage (+/- 35 VDC), Short Circuit, Transient Voltage, TVS/ESD
Connector	5mm pitch screw terminal blocks
Enclosure	ABS Enclosure
Installation Type	Plug and Play
Dimensions	Modular Architecture (132mm x 70mm x 49mm)
Warranty	12 Months from date of installation or 18 Months from date of delivery (whichever is earlier)*

Wire Connectivity	
Connectivity Supported	RS485
Protocol Supported	Modbus RTU
Communication Interface	2 Wire Type
Watchdog Timer	System (5 Sec) and Communication

Wireless Transmitter	
Antenna	2 dB
Antenna Wire Length	3 meters
Frequency band	BW: 125kHz; 868MHz (865.00~867.00)
Modulation	LoRa Modulation
Activation	OTAA/ABP
Data Rate	Standard lorawan DR0-DR5
Max Power	20dBm
Range Of Communication	Around 3 Km at clear Line of sight



Environment	
Operating Temperature	0 to 65°C
Storage Temperature	-10 to 70°C
Operating Humidity	5 – 95% RH(non-condensing)

Mounting	
Built Architecture	Modular
Mounting	DIN Rail Mountable, Wall Mountable, Stack Mountable
Installation	Plug and Play Device

ORDERING INFORMATION	
Product Name	Product Code
RS485 LoRa Converter	XXXX

USE CASE

